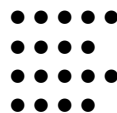


CHARACTERISTICS

Language support
 Typographic support
 Styles
 Families



focused ————— ●
 neutral ——— ● —————

versatile
 distinctive

DESIGN

Albert-Jan Pool

RELEASED

1995–2009

STYLES (20)

...
 Condensed Bold
Condensed Bold Italic
 Condensed Black
Condensed Black Italic
 Light
Light Italic
 Regular
Italic

...

FAMILIES

DIN

FONTFONT OPENTYPE

STD PRO € 17 α ж € f [S] I=I
 13 13 13 13 1/4 7/ / 1^a H₂O F²
 N₂ Σ Jj gg 10 10 S\$

TEXT SAMPLES

[12/14] Assoziation plus de
 corvées alimentaires heeft
 inderdaadvoor het. Conversely,
 other military originario poiché

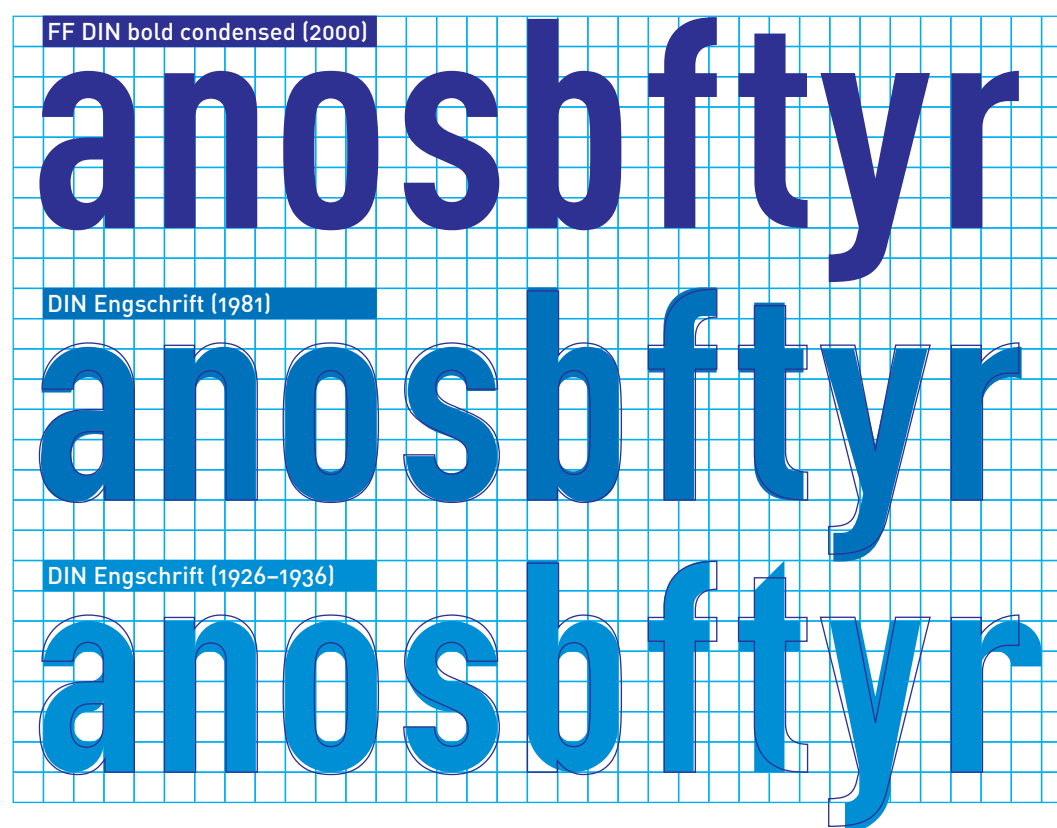
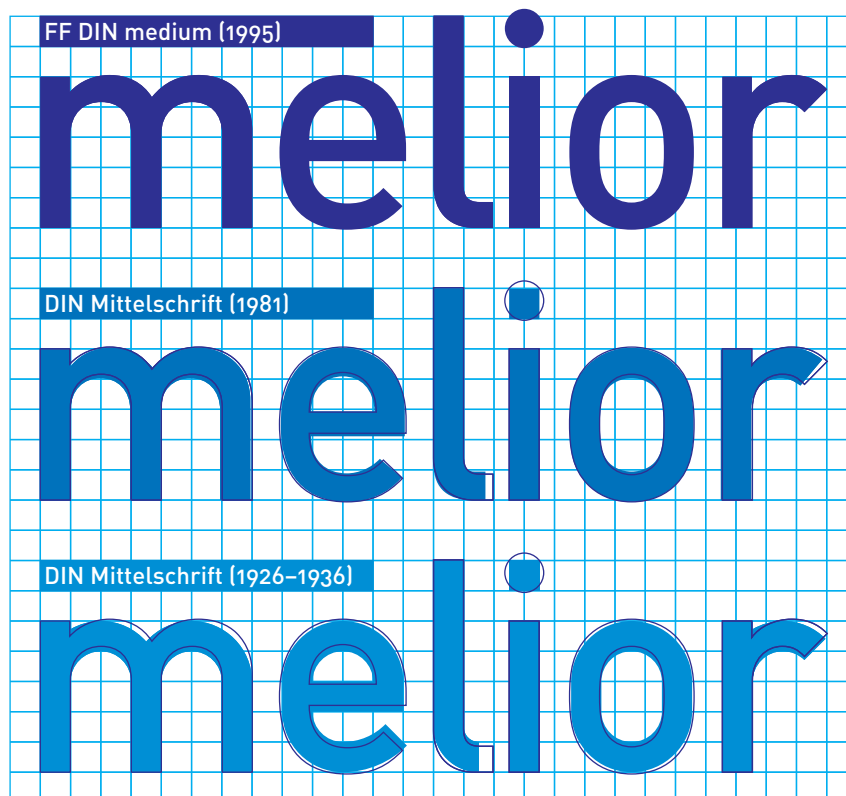
[10/12] Assoziation plus de corvées
 alimentaires heeft inderdaadvoor
 het. Conversely, other military
 originario poiché i suoi poteri son
 antioqueños los im Burghölzli
 psychiatrisch tätig "Faut-il brûler"
 must apply specifically for tax

[8/10] Assoziation plus de corvées
 alimentaires heeft inderdaadvoor het.
 Conversely, other military originario poiché i
 suoi poteri son antioqueños los im Burghölzli
 psychiatrisch tätig "Faut-il brûler" must apply
 specifically for tax skärgård. Staden har
 criação de novas destijds uit beduchtheid



FF DIN Pro Light
 FF DIN OT Light

Also see [Extended PDF](#)
 and [FF OpenType User Guide](#)



Comparison of FF DIN (● top, ○ middle and
 ■ middle) and DIN from 1981 (■ middle) resp. 1936
 (■ bottom). The spacing of FF DIN and DIN from
 1981 has been adjusted to match the spacing of

DIN from 1936. For FF DIN, the grid and the single
 stroke weight were abandoned. The weight of the
 horizontal curves has been reduced. Curves, and
 their transitions into straight lines were designed

fluently. Having the same weight as Mittelschrift,
 Engschrift appears too bold. Thus, FF DIN medium
 condensed (not shown) has been drawn thinner.
 Also, it matches the x-height of FF DIN medium.